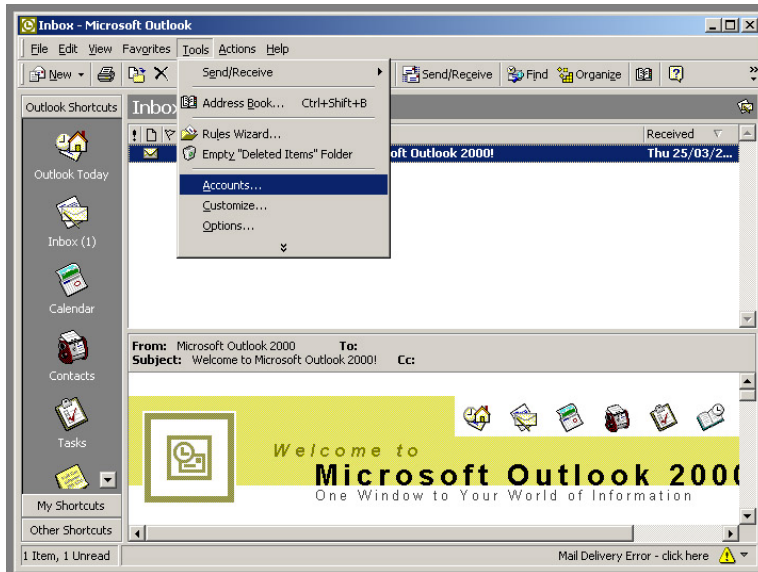


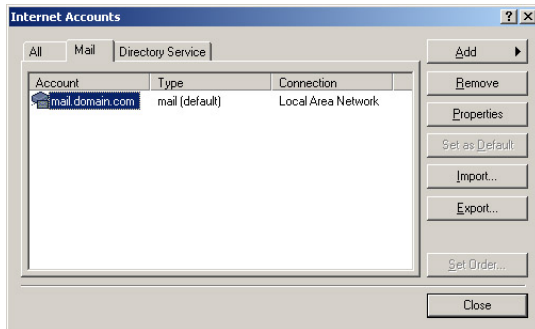


Outlook 2000
Mail Server Set Up

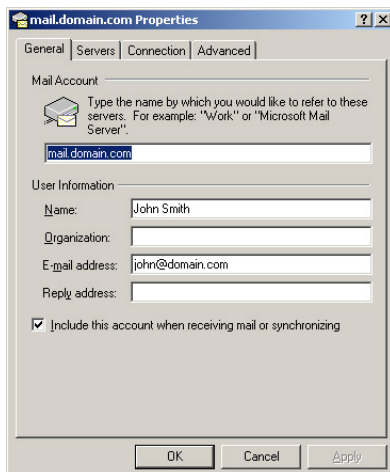
Mail Server Set up



Tools > Accounts.

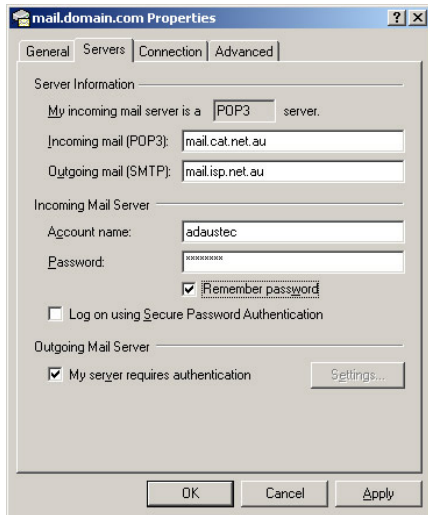


Click on Mail Tab, Click on Properties.

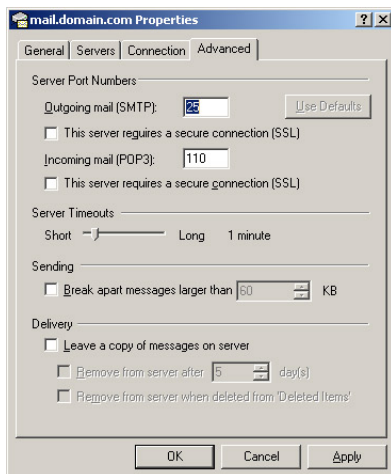


Check all information on General Tab.

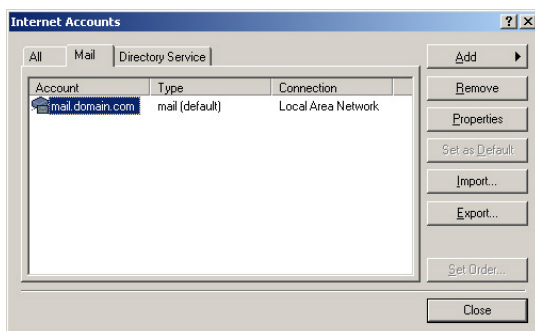
Mail Server Set up



Click on Servers Tab, change Incoming mail POP3, Account name and Password as follows:
Incoming (POP3): mail.cat.net.au
Account name as shown on the email sent to you.
re-enter Password,
Tick Remember password.
Tick My server requires authentication



Click on Advanced Tab and make sure “Leave a copy of messages on server” is unticked.
Click OK.



Click Close.