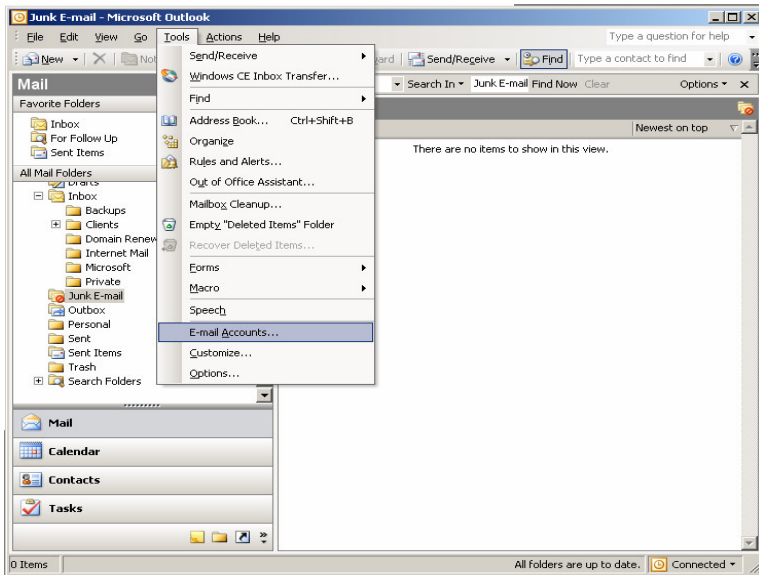


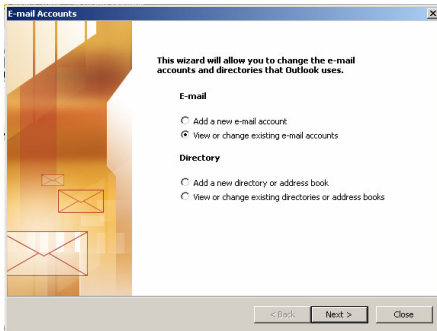


Outlook 2003 Mail Client Set Up

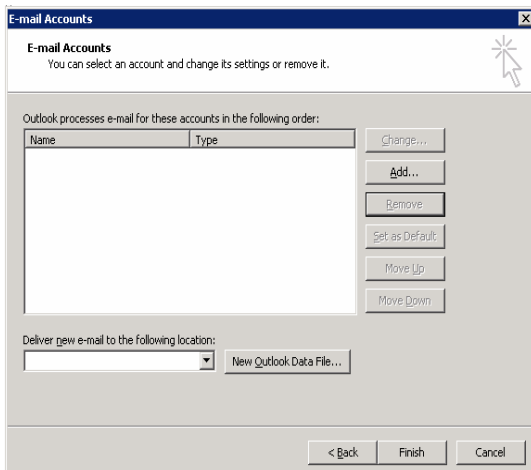
Mail Client Set up



Select Tools > E-mail Accounts from the menu.

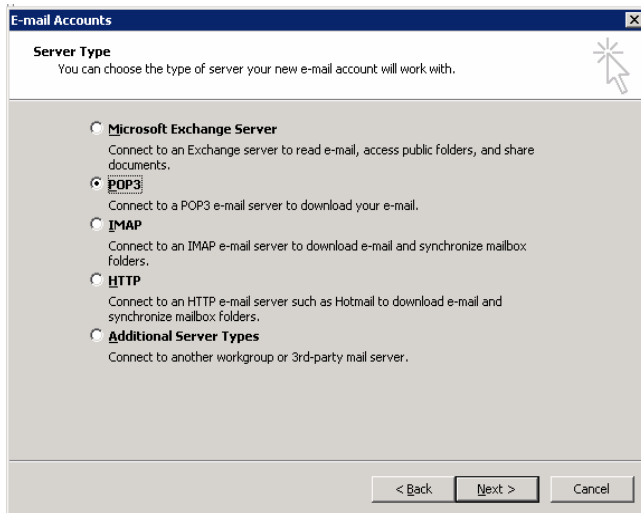


Select "View or change existing e-mail accounts", then click on next.

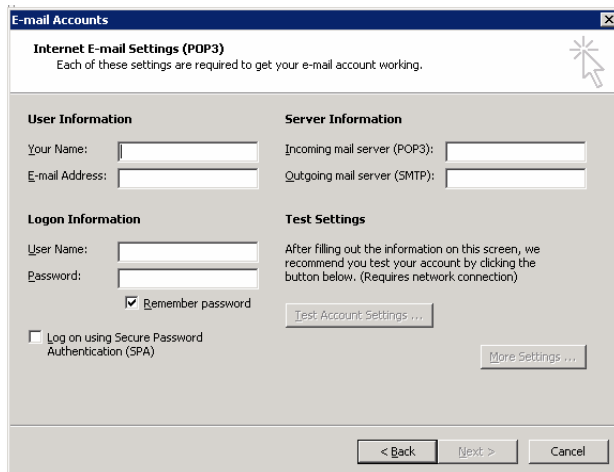


Click on the Add button to add a new account, or click on the change button if you are changing an existing email account.

Mail Client Set up



Select POP3 and click next.



Enter the following details on this screen :-

Your Name: Enter your full name here, this will appear on your outgoing emails.

E-mail address: Your email address.

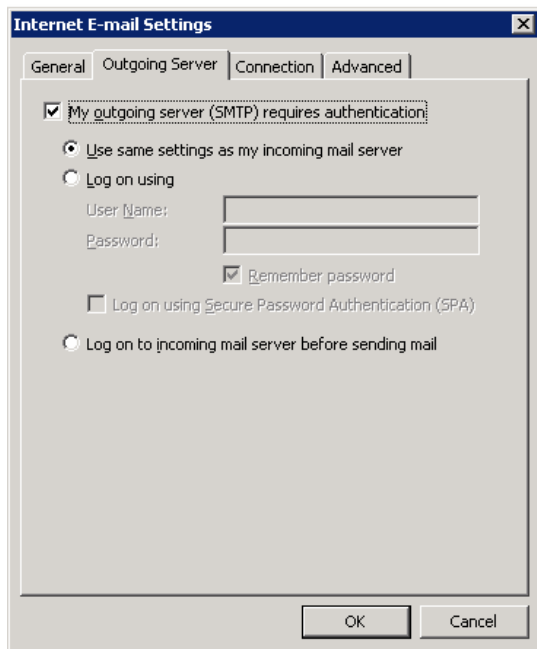
Incoming mail server (POP3): mail.cat.net.au

Outgoing mail server (SMTP): mail.cat.net.au

User name: Enter your username here

Password: Enter your password here

Click on the "Remember password" checkbox



- Click on the “More Settings” button and select the “Outgoing Server” tab from the resulting popup.
- Click on “My outgoing server (SMTP) requires authentication” and select “Use same settings as my incoming server”
- Click on OK to close the popup.
- Click on “Test Account Settings” to test the settings, if you see any errors go back and double check the details you have entered.
- Click on Next and then Finish to finish setting up the account.